

# MONTHLY MEMBERSHIP PROGRESS REPORT

LOCATION SOUTH DAKOTA

District 5 SW

Results as of: 3/31/2021

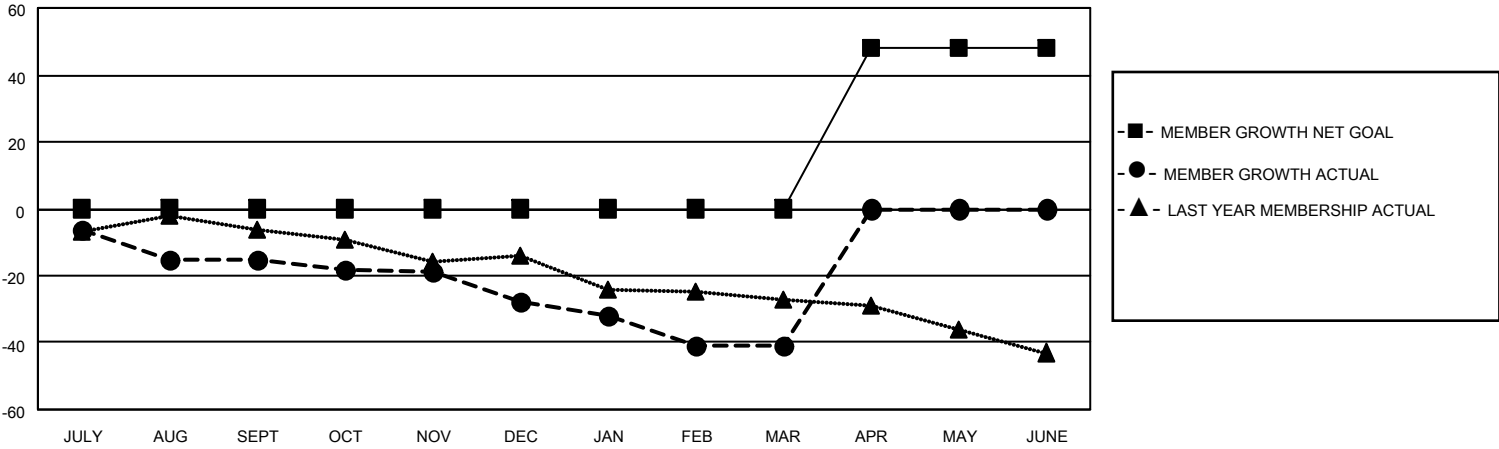
Clubs			
RESULTS FOR 2020-2021			
QUARTER	NEW CLUB GOAL	NEW CLUBS	DROPPED CLUBS
JULY/AUG/SEPT	0	0	0
OCT/NOV/DEC	0	0	0
JAN/FEB/MAR	0	0	2
APR/MAY/JUNE	1	0	0

Members			
RESULTS FOR 2020-2021			
QUARTER	MEMBER GROWTH NET GOAL	MEMBER GROWTH ACTUAL	DROPPED MEMBERS ACTUAL (including transfers)
JULY/AUG/SEPT	0	2	17
OCT/NOV/DEC	0	17	29
JAN/FEB/MAR	0	6	19
APR/MAY/JUNE	48	0	0

**GOALS AND ACTUAL NEW CLUBS CUMULATIVE**



**GOALS AND ACTUAL MEMBERS CUMULATIVE**



DROPPED CLUBS: 2	10 CLUBS OF 33 ADDED 1 OR MORE NEW MEMBERS	<u>GENDER DISTRIBUTION</u> MALE 506 (73.65%) FEMALE 181 (26.35%)
<u>DROPPED MEMBERS</u> DECEASED 12 CLUB CANCELLED 10 OTHER 43 <hr/> TOTAL 65	<a href="#">CLICK HERE FOR CUMULATIVE MEMBERSHIP DATA</a>	TOTAL FAMILY UNIT MEMBERS 102 FAMILY MEMBERS PAYING HALF DUES 52